

# ROOFTOP SAFETY SOLUTIONS

Available through Tremco



Roofing & Building Maintenance  
Part of the Tremco Construction Products Group



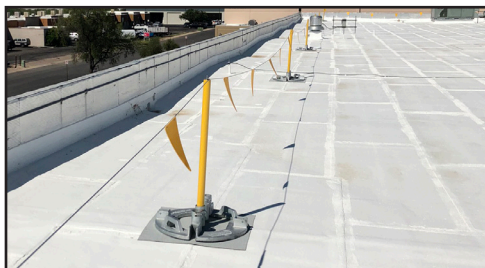
## DYNAROUND RG™ (ROOF GUARD)

DynaRound RG Roof Guard ballasted rooftop guardrail systems are designed for safety and fall protection on rooftop applications. Each system is made of durable, corrosion-resistant fiberglass reinforced plastic (FRP) composite uprights and non-FRP counterbalance weights and connector components. DynaRound RG provides the utmost in safety by protecting against injuries or death from accidental falls from the roof. This system meets all applicable safety standards in the U.S. and Canada to protect individuals on rooftop surfaces.



## DYNAROUND RG SLIMLINE™ (ROOF GUARD)

DynaRound RG Slimline, provides safety and fall protection on rooftop applications with fewer counterbalance bases than DynaRound RG. Similar to our DynaRound RG system, each Slimline system is made of durable, weather-resistant fiberglass reinforced plastic (FRP) composite uprights and rails, galvanized steel base weights, and galvanized connector components. This system meets applicable safety standards in the U.S. and Canada to protect people working at heights.



## DYNAROUND SLIMLINE WARNING LINES

DynaRound Slimline Warning Lines are available in a heavy and light duty design. Our heavy-duty warning line systems can be used as a permanent warning system with heavy-duty galvanized base plates, plastic coated steel cable, and plastic pennants. The standard system includes three stanchions, three bases, and 100' feet of plastic coated steel cable with flags. Our light-duty warning line system can be used as a temporary warning system. This system includes three folding stanchions and 100' of nylon flagged line. All three systems meet all applicable safety standards in the U.S. and Canada to protect individuals on rooftop surfaces.



## DYNAROUND HATCH GUARD

DynaRound Hatch Guards provide a non-penetrating guard solution for safe entry and exit through roof access hatches. The adjustable self-closing gate prevents accidental entrance when the hatch is open. The DynaRound Hatch Guard mounts directly to the roof hatch with a compression fit design so no drilling is necessary, which means the rooftop waterproofing system is not compromised. This system meets all applicable safety standards in the U.S. and Canada to protect individuals on rooftop surfaces.



## DYNAWEIGHT FALL PROTECTION SYSTEM

The DynaWeight Fall Protection System is the perfect solution for fall protection when circumstances require non-penetrating versatility. This system is tested and approved for use on flat rooftop surfaces (single ply, BUR, concrete, modified bitumen membranes, liquid applied membranes - AlphaGuard™ BIO, AlphaGuard™ MT/MTS, and AlphaGuard™ PUMA), with a maximum incline of 5 degrees. It provides tie off options for two people if used for fall restraint or one person for fall arrest, sets up quickly and is easy to move. The DynaWeight Fall Protection System is corrosion resistant and meets all applicable safety standards in the U.S. and Canada to protect individuals on rooftop.



800-852-6013



[www.tremcoroofing.com](http://www.tremcoroofing.com)



[SafetySolutions@tremcoinc.com](mailto:SafetySolutions@tremcoinc.com)

**NOW YOU CAN LEAD WITH SAFETY.**

Contact your Tremco Roofing sales representative today  
for a rooftop safety evaluation.



Construction Products Group

# ROOFTOP SAFETY SOLUTIONS

Available through Tremco



Roofing & Building Maintenance  
Part of the Tremco Construction Products Group



## CROSSOVERS

Our FRP Crossovers are pre-engineered and both corrosion- and slip-resistant. Available in a variety of heights that address most standard clearances, these Crossovers provide a cost-effective, safe solution over many rooftop obstructions. Crossover systems create a safe working environment, are lightweight, easy to install and designed to meet all applicable safety standards in the U.S. and Canada.



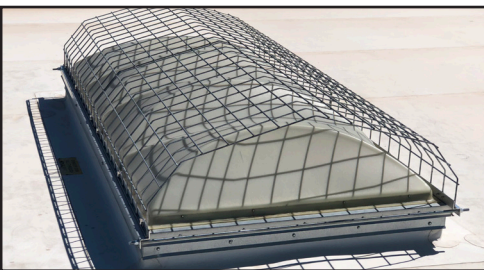
## FRP DYNARAIL® SAFETY LADDERS

DynaRail Safety Ladder Systems combine corrosion-resistant properties with a low maintenance design to ensure a long life cycle. Ladder rungs include heavily serrated flutes for slip-resistant footholds that are easy on the hands while ensuring safety. Our lightweight system is designed and manufactured to be easily installed with no guesswork, which saves you on labor and equipment. UV inhibitors in the resin along with a secondary UV coating maximize protection from the effects of UV weathering. The DynaRail safety ladder system meets or exceeds all applicable safety standards in the U.S. and Canada.



## DYNAMIC DOMES

Our Skylights are architecturally elegant, strong, and capture the most daylight in the early morning and late afternoon when compared to competitive skylights. This is due to their revolutionary dome design engineered to maximize low angle sunlight giving them superior daylight capturing capabilities.



## SKYLIGHT GUARDS

Our Skylight Guards are designed to protect against injuries and deaths around skylights. The non-penetrating design is available in customizable sizes and features a unique compression attachment system. All our skylight guards are designed to meet all applicable safety standards in the U.S. and Canada.



## CORVEX® MOLDED GRATING WITH RUBBER FEET

Molded Walkway Grating is made with a unique Corvex resin system that outperforms many competitive fiberglass and metal products. Our molded grating is corrosion resistant, lightweight, slip resistant, and easy to install. Specially designed rubber feet can be added to molded grating, elevating it ½" above the surface, offering an economical raised walkway solution for use around maintenance equipment, machines, wet areas, and rooftop walkway areas.



800-852-6013



[www.tremcoroofing.com](http://www.tremcoroofing.com)



[SafetySolutions@tremcoinc.com](mailto:SafetySolutions@tremcoinc.com)

**NOW YOU CAN LEAD WITH SAFETY.**

Contact your Tremco Roofing sales representative today  
for a rooftop safety evaluation.



Construction Products Group